

Deadline for Submission to the April Issue:
March 20, 2025



March 2025

THE HEAD OWL HOOTS

Burnell Breaker

Greetings WISE Members!

We had another great meet this month at the New Berlin Public Library. Dave Nelson, Mike Janke and Ken Thompson presented very interesting clinics. We tried something new for February and had our layout tour before the meet and it was well attended by at least a dozen members at the North American Prototype Modelers. I believe we will go ahead with this format going forward next season.

Our final met of the season will be March 22 at the Oconomowoc Historical Museum. The Milwaukee Northwestern Club will be presenting the 2 clinics and layout tour. We will also have our annual meeting at that time. This will be the final meet for the season on account of Easter being late this year and falling on the weekend we usually would have our meet.

Next season we will start out with our Modelers Retreat, Saturday, September 13 at St. Paul's Lutheran Church, Kenosha. Mike Slater is the coordinator for this event. This event is for modelers to showcase their various model railroading skills and share that information with other modelers. Tables for displays are free and contact Mike to reserve a table. If you would like to give a clinic, there are some options for that as well. We are also looking for modelers selling items or services that would be of interest to other modelers. This is not a swap meet. There is a minor fee for a table to sell. We are hoping to have a few area layouts open to visit after the retreat.

The rest of the season is looking like this. October 18 at the New Berlin Library, November 1 & 2 at Trainfest, January 10, 2026 Train School at the New Berlin Library (tentative), February 21 & 22, 2026 Mad City Train Show, March 21 and April 18, 2026 at the New Berlin Library (tentative). Watch the Owl Car and maybe a special email when we officially release the 2025-2026 schedule. We would like to do one meet each season in another area of the Division but we need your help in locating reasonably priced or free locations for our meets. If you live in an area not near the New Berlin Library and would like to see a meet in your area, locate a place for us to have a meet and we can take it from there.

Besides our March 22 meet, we will also be at the March 16 Lionel Railroad Club Train Show and Sale selling items from our estate collection donations. If you hear or know of anyone who is looking to donate their collection let us know.

We have another Master Model Railroader in our Division. Ray Meyer just earned MMR 779 and he was presented his plaque at our February 22 meet by our AP Chairman Dave Poquette.

We'll see you in Oconomowoc at our March 22 meet.

Model Railroading is Fun.

Burnell



Wisconsin Southeastern Division Midwest Region
of the National Model Railroad Association

2024-2025 Schedule of Events

Sunday, September 15, 2024 - 9AM to 3PM

Kettle Moraine Ballast Scorchers Railroad Club Model Railroad Show & Swap Meet

Washington County Fair Park, West Bend
(Extra Fare Event)

Saturday, September 28, 2024 - 9AM to 3PM

Model Railroad Retreat - St. Paul's Lutheran Church

NON-MEMBERS \$5.00
8760 37th Avenue, Kenosha

Saturday, November 16, 2024 - 1 PM

Monthly Meet - New Berlin Public Library Community Room

FREE ADMISSION (Contests, Clinics, Bring & Brag, Layout Tour)
15105 Library Lane, New Berlin

Saturday & Sunday, November 23-24, 2024

Trainfest - Baird Center, Milwaukee

(Extra Fare Event)

Saturday, December 14, 2024 - 1 PM

Monthly Meet - New Berlin Public Library Community Room

FREE ADMISSION

Saturday January 18, 2025 - 1 PM

Train School - New Berlin Public Library Community Room

FREE ADMISSION

Learn about this great hobby and all it offers from local modelers.
Stations will be set up to discover different aspects of the hobby.

Saturday & Sunday, February 15-16, 2025

Mad City Train Show - Alliant Energy Center, Madison

(Extra Fare Event)

Saturday, February 22, 2025 - 1 PM

Monthly Meet - New Berlin Public Library Community Room

FREE ADMISSION

Saturday, March 22, 2025 - 1 PM

Monthly Meet and Membership Meeting Oconomowoc Historical Museum

FREE ADMISSION

103 West Jefferson Street, Oconomowoc

Sunday, April 13, 2025 - 9 AM to 4 PM

Metro Model Railroad Club Model Railroad Show

Ozaukee County Fairgrounds, Cedarburg
(Extra Fare Event)

BRING & BRAG about your recent acquisitions, layout progress or rail adventures at the Meets!

Upcoming Division Events:

Executive Committee Meetings

March 12 7:00pm at Lionel Railroad Club and Zoom

WISE Division Meeting

March 22 1:00pm Oconomowoc Historical Museum

Join Zoom Meeting

<https://us02web.zoom.us/j/82116880636?pwd=euk76tE0ElvG846Z4TWjOQtweJDczD.>

1 or us Meeting ID: 821 1688 0636 Passcode: 261

+1 312 626 6799 US (Chicago)

Clinicians Invited at NMRA Convention

The great clinic presenters in the Division are invited to present their clinics at the 2025 NMRA Convention in Novi, MI in July 2025. We expect to have about 200 clinics taking place throughout the week. If interested, please email your contact information and clinic ideas to me at hazmatrichm@aol.com. I will respond to your email with the forms that need to be completed.

We have nearly 200 people already registered, at this time, for the convention which will start on Monday July 14 to Saturday July 19. We have reduced the costs by reducing the registration fees, but, yet we will be staying in a very nice Sheraton Hotel. Most of the activities, such as the layout tours, will be accessible using your personal vehicle.

" It is the 90th year of the NMRA! So, it will be a convention like none other!"

Rich Mahaney
NMRA NCR President
269-214-4221



2025 NMRA National Convention
Station No. VI - hosted by the North Central Region of the NMRA

A Word about Constant Contact e-mail

Each Constant Contact e-mail includes links to update or unsubscribe your e-mail address. **Please do not use these links.** If you unsubscribe using the Constant Contact link, your e-mail address will be removed from the NMRA membership database, from the Midwest Region e-mail database and probably from your Division's records. If you get an e-mail that you don't want, just hit the delete key. Furthermore, if you use the update link, your change may not be timely posted to the NMRA membership database.

If you need to change your email address with the NMRA please follow these directions:

The direct way is to log on to the "Members" page of the NMRA website, choose the "View your NMRA membership" box on the right side of the screen, scroll down to the bottom of the page and select "Update". Enter the new email address in the appropriate box and click "Submit".

Division Video Library

A reminder for everyone that the Division's Video Library is available for members to checkout DVDs.

As I stated after the Division went inactive, I cannot do both jobs of being the Interim Superintendent and Video Librarian, bringing and managing the Video Library at our meets. If you would like to checkout any DVDs, look at our catalog on wisedivision.org and contact me with the number and title of the one(s) you would like to view. I will bring them to our next meet or you can pick them up at my business. The DVDs are currently stored in my company's warehouse in Caledonia.

If you are interested in taking over the Video Library, contact me. It's an easy job, where you need to bring the Video Library to our meets and manage the checking out and receiving of them from the members.

Burnell Breaker
superintendent@trainfest.com
262-939-9193

Membership Directory

We have not updated our Membership Directory in over a decade. The information in this directory is vital to the ongoing revitalization of the Division.

As your new Layout Tour Chair, updating this document is my priority. With the information contained within its pages, we will be able to foster camaraderie and the sharing of ideas and expertise that is a key to a thriving organization and something that is greatly needed in the Division.

My plan is to send out a form by email, in the new year, asking for your contact information and details about your layout and other model and protyping interests. Please consider responding to my request. The Division is moving in a new direction, and this directory will be an essential part of this revival.

David Mielke
Layout Tour Chair

A Note from the Editor:

The Division seems to be on the threshold of a revival! There is more chatter about the Division's events and a renewed interest in the hobby.

I strive to add to this revival by publishing each month articles and information that is of value to the membership. As I have asked often, please send me submissions. Photos and story leads are greatly appreciated, but I'm also seeking articles about trouble shooting, scenery hacks and sources for hard-to-find inventory or great deals.

Please remember that the deadline for the April issue is the 20th of March. So, keep this deadline in mind and send your articles and photos to the Owl Car to owlcar@trainfest.com.

Your Editor
Cindy Mielke

AP Achievement Program

Dave Poquette

To most NMRA members, the NMRA Achievement Program (AP) is a way to achieve the Master Model Railroader (MMR) status. You must earn 7 certificates in 4 different categories (model railroad equipment, settings, engineering and operation, service to the hobby). Each category is broken down into subcategories as follows:

- Model railroad equipment
 - Motive Power
 - Cars
- Settings
 - Structures
 - Scenery
 - Prototype Models
- Engineering and Operation
 - Civil Engineer
 - Electrical Engineer
 - Chief Dispatcher
- Service to the Hobby
 - Association Official
 - Association Volunteer
 - Author

Obtaining the MMR status can be a daunting task. It takes commitment and many hours to achieve. The process is well worth the effort. I am currently going through the process and have spent countless hours achieving 5 AP certificates and 3 merit awards towards a 6th certificate, structures. I feel that going through this process has made me a better modeler in many ways. I only wish I could have saved that switch tower that I made from cardboard or even the Revell models that I built when I was knee-high to a grasshopper so that I can compare it to the models that I'm building now.

You can find more information about the Achievement Program at <http://nmra.org> and click on the Education tab. If you have further questions, feel free to contact me. My contact information is listed in the Division Leadership section of this newsletter.

If you don't feel like this is "your cup of tea", then at least consider earning a Golden Spike Award. Unlike the AP, you don't need to have your models judged nor do you have to earn 7 certificates. You just need to have built a layout that meets certain requirements:

- Display 6 pieces of rolling stock. These can be scratch built, craftsman kit, super detailed commercial kits.
- Construct a minimum of 8 square feet of model railroad or module(s) including scenery in any scale.
- Construct 5 structures. These can be scratch built, craftsman kit, or super-detailed commercial kits. If a module has less than five structures, additional structures separate from the scene may be presented.
- Three types of tracks are required (turnout, crossing, cross-over, etc.). All tracks must be properly ballasted and installed on proper roadbed. Commercial track can be used.
- The track must be wired so that 2 trains can be operated simultaneously.
- One additional electrical feature must be used. This can be powered turnouts, turnout indicators, lighted building, signaling, etc.

Most of you may already qualify for a Golden Spike Award. If you think you do qualify for a Golden Spike, fill out the attached form and contact me. I will come to your layout to see if you qualify. Please message me at ap@trainfest.com.

	<p style="text-align: center;">ACHIEVEMENT PROGRAM GOLDEN SPIKE AWARD APPLICATION FORM FEBRUARY 2019</p>
---	---

PLEASE COMPLETE THIS APPLICATION FORM AND SEND TO YOUR DIVISION OR REGION AP MANAGER

Member Name: _____ NMRA#: _____ Expiration: _____

Address: _____ City: _____

State/Province: _____ Country: _____ Zip/Post Code: _____

Date Submitted: _____ Region: _____ Division: _____

- The Golden Spike Award (GSA) will be awarded to any NMRA member who completes the Qualifications Checklist, obtains the necessary signatures (Division AP Manager or some local NMRA member approved by the Division AP Manager), and if the applicant does not already hold MMR status.
- The GSA will be administered by the Division and Region AP Managers.
- AP requirements and definitions apply for scratch building and super-detailing.
- The Division AP Manager will submit the signed form to the Region AP Manager who will issue the Golden Spike Award certificate.
- The Region AP Manager will then forward the completed form to the National AP Manager so that an announcement can be made in the NMRA Magazine.

GOLDEN SPIKE AWARD QUALIFICATIONS CHECKLIST:

1. Rolling Stock (Motive Power & Cars):

- Display six units of rolling stock either scratchbuilt, craftsman kits or superdetailed commercial kits.

2. Model Railroad Setting (Structures & Scenery)

- Construct a minimum of eight square feet of model railroad or module(s) including scenery in any scale.
- Construct five structures either scratchbuilt, craftsman kits or superdetailed commercial kits. If a module has less than five structures, additional structures separate from the scene may be presented.

3. Engineering (Civil & Electrical)

- Three types of track are required (e.g. turnout, crossing, crossover, etc.). All must be properly ballasted and installed on proper roadbed. Commercial track may be used.
- All installed track must be properly wired so that two trains can be operated simultaneously (e.g. double track main, single track main with sidings, and block or command or other form of control).
- Provide any one additional electrical feature such as power operated turnouts, signaling, turnout indication, lighted buildings, etc.

Witness: _____ Name: _____ NMRA #: _____

Region AP Manager: _____ Region: _____

MMR Award Recipient

Congratulations to Ray Meyer of Port Washington for earning MMR#779. Ray earned his MMR by successfully completing the following Achievement Program certificates:

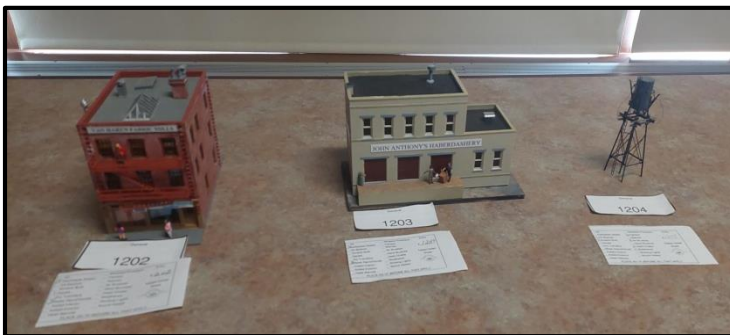
Master Builder – Motive Power
Master Builder – Cars
Master Builder – Structures
Master Builder – Scenery
Chief Dispatcher
Association Volunteer
Model Railroad Author



Monthly Contest Winners:

Congratulations to Robert Niedermann and Dave Poquette this month's Modeling and prototype Railroad Contest Winners.

This month, there were four contestants submitting three structures, an engine and a circus wagon for judging. Best in Show and First Prize were awarded to Dave Poquette for his very detailed CNW sanding tower. Second place was won by Robert Niedermann for the Van Haran Fabric Mills building.



Modeling & Prototype Railroad Contests

Rules for WISE Division's Popular Vote Contest Effective December, 2015

Awards:

- **1st Place:** 1st Place award certificate, and two (2) gift certificates (NMRA MEMBERS). One gift certificate (NON-NMRA MEMBERS).
- **2nd Place:** 2nd Place Award certificate.
- **Best of Show:** Plaque (Wisconsin Outline), and two (2) gift certificates. (NMRA MEMBERS). One gift certificate (NON-NMRA MEMBERS).

Youth Award:

- **1st Place:** 1st Place Award certificate and two (2) gift certificates. (NMRA MEMBERS). One gift certificate (NON-NMRA MEMBERS).
- **2nd Place:** 2nd Place Award certificate.

Categories:

Motive Power – Steam	Motive Power – Diesel
Traction / Electric	Passenger Equipment
Freight Equipment	Non-Revenue Equipment
Structures (on and off-line)	General (includes dioramas and trains)
Photos – Model	Photos – Prototype
Train Related Crafts	Youth – 8-17 years

Rules:

- 1) The contest is open to all persons attending the meet.
- 2) **The Model MUST be the work of the person listed on the sign in card. Photos entered MUST be taken by the person listed on the sign in card.**
- 3) Models can be of prototype or free-lanced railroads.
- 4) Models can be of any scale or gauge.
- 5) Models can be kit-built, kit-bashed, or scratch-built.
- 6) Persons entering must apply entry to a category. However, the Contest Director will determine the category in which the model will be entered.
- 7) Only two entries per person per category are permitted.
- 8) If only one person has entered a model, slide, or photo in a category, a "No Contest" will be declared.
- 9) If any entry has previously won a first place award in its category, it may not be re-entered in that category. However, if a structure, loco, or car has won an award in its category, it may be re-entered as a diorama entry (General Category).
- 10) All categories listed above will be grouped together when under the Youth category. Entrants must be 8-17 years of age and must have done 50% or more of the work on the model.
- 11) **Matted photos cannot be larger than 11 by 14 inches.**

Voting:

All voting will be by ballot. One ballot per person, by those persons attending the meet. Ballots are to be tabulated by the Contest Director and committee. The Superintendent, or their representative, will not vote by ballot, but will cast a tie-breaking vote in any category where the popular vote is tied.

NMRA Membership Benefits

Gary Hendrickson

While the Division offers its members clinics, presentations, layout tours and events, there is so much more for the model railroad enthusiasts and that more comes with NMRA membership. NMRA membership offers so many benefits and perks that you may never have imagined.

Now, what exactly are those NMRA membership benefits? Well, there are actually quite a few. So, here's a list the more prominent ones...

- **Beginner's Guide**

Learn the basics of trackwork, wiring, scenery, and more in this [online guide](#).

- **Fellowship with other model railroaders through virtual and face-to-face connections**

Participate in regularly scheduled in-person division, national, and virtual events.

- **Online Video Library**

Dozens of professionally produced "how-to" videos as well as more than 150 National Convention [clinic videos](#).

- **NMRA Member's Aid Program**

Ask a [question, any question](#), about the NMRA or about model railroading – and get an answer!

- **Modeling With the Masters® (MWTM)**

Get coaching in hands-on learning experiences led by Master Model Railroaders® in [MWTM](#).

- **National Conventions**

Held in a different location in the US every year, the [National Convention](#) is a week-long event featuring multiple model railroad layout tours, operating sessions, prototype tours, hands-on clinics, and presentations.

- **Model and Photography Contest Participation**

Participate in the [celebration of models, photos, and crafts](#) at Divisional Meets, as well as Regional and National Conventions.

- **Partnership Program**

Receive discounts on model railroad products and services from free shipping to 40% off all purchases.

- **Grouper**

US-based members, over the age of 65 with a Medicare Advantage, may be eligible [for reimbursement of their](#) annual NMRA dues.

- **Annual NMRA Calendar**

Features twelve of the best of the best model railroad photographs annually in a fund-raiser to members in the USA.

NMRA Membership Benefits (continued)

- **NMRA eBulletin**

A [monthly email newsletter](#) with the latest updates and news direct from the NMRA

- **Model Railroad Directory**

Contact NMRA members in the [Model Railroad Directory](#) for a layout tour, to talk trains, or to participate in an operating session

- **NMRA Turntable**

A [monthly curated email newsletter](#) with some of the most interesting model railroad websites, videos, blogs, and articles on the web.

- **NMRA Magazine - monthly print and online/digital**

Print and online/[digital monthly publication](#) featuring news about the organization and its Regions and Divisions, along with modeling articles, product conformance reviews, and other information. *Each member automatically gets access to the digital version of the NMRA Magazine with your membership. Print versions require a subscription.*

- **NMRA Interchange**

Connect electronically with NMRA members around the world to ask questions, provide answers, post events, share ideas, and make friends in the [NMRA Interchange](#).

- **NMRAX – The NMRA's Monthly Virtual Meetup**

The NMRA's Monthly Virtual Meetup of model railroad presentations broadcast over YouTube Live. [NMRAX](#) provides an opportunity for attendees to directly interact with the presenters.

- **NMRA Online Archives**

Scans of more than 10,000 photographs, slides, plans, drawings, paint schemes, and more available for download at a discount to members in the [online archives](#).

- **Achievement Program (AP)**

Push your skills to new levels while earning recognition for your efforts in the Achievement Program.

- **Train School**

The January WISE Division meet is a live train school, mentored by our seasoned experts, covering a multitude of railroad modeling topics at learning stations all around the room.

- **Standards and Conformance**

Be a part of the organization that sets the [standards](#) for and verifies the [conformance](#) of model railroad products and technologies. Purchase Standards Gauges at significant price reductions over retail prices. Track templates and decals also available in the [Company Store](#).

For more benefits and information on how to become a member, visit the NMRA website at [National Model Railroad Association](#) or follow the NMRA on Facebook <https://www.facebook.com/NMRA.org>

National Railway Historical Society

With its roots in the past and its eyes on the future, the National Railway Historical Society is transforming rail preservation in the U.S. The original society was formed as a consolidation of two of the earliest railfan clubs in the US, the Lancaster (PA) Railway & Locomotive Historical Society and the Interstate Trolley Club of Trenton NJ. The official goal of the new society was, “to preserve steam and electric railway historical material; to encourage the building of model railways; to secure data on the history of transportation; and to encourage rail transportation.” It does so by supporting train, railway and station preservation projects as well as education, photographic archives, events, publishing, standards definition and shared resources. The NRHS is a non-profit section 501(c)(3) organization, and contributions are tax-deductible. More information about NRHS may be found at www.nrhs.com.

One of its unique programs is RailCamp; an educational experience for high school students who have an interest in railroads and railroading. The program is designed to teach students about 21st century railroad operations, dispatching, and maintenance while providing an experience in the early history of U.S. railroads in the development and settlement of our country.



Students will learn about both modern and historic components of America’s most vital transportation mode, including how diesel, electric, and steam locomotives function, how track is built and maintained and how early freight and passenger cars were constructed, categorized by equipment type, location, subject and more. Find more information at <https://nrhs.com/programs/railcamp/>

Since its inception over 90 years ago, NRHS has grown from 40 founding members to include over 13,000 men and women of all ages and professions in chapters in every state and many foreign countries, making it the nation’s largest rail preservation and historical society. The Wisconsin chapter was founded in 1950. Its purpose is to gather, preserve and disseminate information, both historical and current, pertaining to railroading in Wisconsin and the Upper Midwest.

The chapter holds membership meetings on the first Friday evening of the month (except July & August) in Fox Point, just north of Milwaukee, and streamed online via Zoom. The chapter meets at 7:30 p.m. in the lower level meeting room of the North Shore Congregational Church, 7330 North Santa Monica Boulevard. Meeting programs are presented by leading local railroad historians, photographers, enthusiasts, and people involved with the railroad industry. The meetings are always open to anyone who has an interest in railroad history or today's railroad operations, and no admission fee is charged. Follow us on youtube.com/@NRHSWis, on [Facebook](#), or our website: <http://www.nrhswis.org>

NRHS

WISCONSIN CHAPTER

EST 1950

75
YEARS
1950-2025
WISCONSIN CHAPTER, NRHS

Find the latest NMRA and WISE Division information at [WISE Division of the NMRA Welcome](#)



Welcome to the NEW WISE Division of the NMRA

Model Trains & Railroads in Southeast Wisconsin
You found us! You do like railroads and trains whether their real or models right?
Great! We do too!



as with many new websites- a few links are not working right

[About Us](#)
[Upcoming Division Events](#)
[Owl Car](#)
[Area Model Railroad Clubs](#)

TRAIN SCHOOL

SATURDAY JAN. 18, 2025 1-4PM

FREE ADMISSION

Learn how to turn that Christmas train set into a permanent layout. Receive help with Track Work, Wiring, Maintenance, Scenery, DCC Programming, 3D Printing, Layout Construction. Assemble a Freight Car or Building Kit.

NEW BERLIN
PUBLIC LIBRARY COMMUNITY ROOM
15105 W LIBRARY LN, NEW BERLIN, WI

[Local Hobby Shops](#)

[Local & Not So Local Model Train & Train Shows](#)

[Area Railroad Historical Societies](#)

[Model Railroad Organizations](#)

[NMRA National Web Site](#)

[NMRA MWR Region Web Site](#)



[2025 National Convention](#)



[2026 National Convention](#)

2027 Convention



[Follow us on Facebook!](#)



[Follow us on YouTube!](#)

[Wise Division Photos](#)

[WISE Division Administration](#)

[Local / Regional Railroad Museums](#)

[DVD Library](#)

[Mission Statement](#)

[Constitution](#)

[By-Laws](#)

© 2024 WISE DIV, NMRA, Inc. All rights reserved.
WISE DIVISION, NMRA, Inc. is a 501(c)(3) non-profit organization.

Division Leadership

Board of Directors

- Burnell Breaker --- Superintendent
superintendent@trainfest.com
 262-939-9193
- Robert Niedermann --- Assistant Superintendent
Asst.super@trainfest.com
 414-587-4778
- David Rohr --- Chief Clerk (Secretary)
chiefclerkwisediv@gmail.com
 262-783-7230
- Tim Koch --- Director at Large
tim@trainfest.com
- David Mielke --- Director at Large
mielkemanor@att.net
- Open --- Paymaster
 Dennis Janssen --- Assistant Paymaster

Committee Chairs

- Gary Hendrickson --- Membership
members@trainfest.com
 847-800-1380
- Dave Nelson --- Clinics
engine1385@aol.com
- Dave Poquette --- Achievement Program
ap@trainfest.com
- Dave Mielke --- Train School/ Layout Tours
mielkemanor@att.net
- Cindy Mielke --- Owl Car Editor
owlcar@trainfest.com
- Mike Slater --- Social Media Manager
m Slater@wi.rr.com
 262-515-3623
- Jim Hebner --- Webmaster
webmaster@trainfest.com
- Open ---
 Picnic/Bus Trips ---
 Contest ---
 Video Library ---

FROM the NMRA Please Keep in Touch



Please make sure the NMRA has your current contact information. You will not be able to access the full range of NMRA benefits unless we can reach you.

- Please visit nmra.org/members
- Use your email address and password to log in.
- If you have not yet registered, or forgot your password, there are buttons for that. Take a moment to easily correct any problems.
- Once logged in, click on Member Info (top right corner).
- Make sure your information is correct.
- If not, please go to:

nmra.org/request-membership-info-changes

to submit a request for changes to be made.

Thank you!

The WISE Owl Car is published by the Wisconsin Southeastern (WISE) Division of the National Model Railroad Association (NMRA).

Subscription is free in an electronic format to all NMRA members residing within the boundaries of the WISE Division.

The Wisconsin Southeastern Division, Inc does not offer any warranties or guarantees, nor assumes any liability from the information contained in this publication.

Permission is granted to the use of news items in other publications provided credit is given to the Owl Car and author.

Trainfest and the Trainfest logo are registered trademarks of the WISE Division, NMRA, Inc.

Please send any comments, information, or editorials to Editor Cindy Mielke via email: owlcar@trainfest.com

December Board of Directors Minutes

**Wisconsin Southeastern (WISE) Division of the NMRA
Board of Directors Meeting
Wednesday, January 8, 2025
Location: Lionel Railroad Club & Zoom**

Meeting called to order by Burnell Breaker at 7:03 pm

Officers Present - Burnell Breaker (Superintendent)
Robert Niedermann (Asst-Superintendent)*
David Rohr (Secretary, Chief Clerk)
Tim Koch (Director At Large)*
David Mielke (Director At Large) (Train School) *

Chairs Present - Cindy Mielke (Owl Car)*,
Mike Slater (Facebook)*, Gary Hendrickson (Membership)*, Jim Hebner

Guests – None * attended by Zoom

Officers Not Present – Paymaster – open position

Minutes: No changes noted from the December meeting minutes, approved.

Paymaster Report:

Dennis J has returned as Assistant Paymaster, this is a non-voting positions.
Everyone was ok with this. No changes noted from the December report, approved

Membership:

Gary Hendrickson submitted report:

1) Attendance at the December meet was the lowest in a while. Looking at the Guest sign-ins, and confirmed by David M, none of the prospects David and I encountered (engaged with) at Trainfest showed up.
We will be watching to see if any of the ones who seemed to commit to Train School show up for that.

2) Division Roster Status - Dec. 31 Report. In December our membership dropped by about 10 to 125.
There were two deaths - Charlie Rice in Racine (Aug `24), and Life Member John Riemer in Waukesha who joined NMRA in January 1960. There were 5 30-day past dues, Charlie and Joan Rice among them. There were 3 renewals.

I will be working on getting out badgering emails to the non-renewals.

Clinics:

Dave Nelson is working on programs for the February Meet

AP Program:

No Report from Dave Poquette

Website:

Jim Hebner - Everything is good. As of the meeting, No PDF file repository at the moment. – WiseDivision.org.

December 14 Meet:

Post Mortem thoughts – It went well,
December is too busy, or just bring in some slides, or videos to show.

Show Schedule –

~~February 15 & 16 – SCWD Mad City Show (Not doing – no helpers)~~
March 16 – LRRC Swap (WISE Meet March 22)
April 13 – Metro Club Swap - Cedarburg

Layout Tours:

Dave Mielke stated he is looking for layouts. An option could be to have NAPM (North American Prototype Modelers) maybe prior to a meet 10 am - 12:30, Another option would be Union Grove Tri-County.

Train School:

Dave M thinks it's too late to do a train raffle or give away.
We will need 2 cartons of buildings. Need tools for car assembly, where did they go?
Wait until 1 pm to open the doors.
Not sure if we can do a raffle, without a raffle license, or no \$\$ rule from the library.

Owl Car:

January issue was sent at December 31, another good issue.
Deadline for February issue is January 15.
Per Dennis Jansen via Constant Contact is Open rate of the email is 66% - click rate on the Owl car link is 26%.

Model RR Retreat:

We have a date of Sept 13, 2025, need a location.
The NB Library will not allow money changing hands. Dave M's church in Kenosha is available.
Need "Save the Date" flyers for Madison show to hand out.

Old Business

- **Zieger Estate** – A few items went to Tom Southside trains to sell.
- **Trainfest 2025** – The Mothership will sign contracts once the budget is established and approved at the NMRA winter meeting at the Big E – Amherst show end of January.
Need to get invitations out to vendors, manufactures, layouts
- **2025-2026 Schedule of Events** – thinking ahead . . . Model RR at Kenosha at St. Paul's Lutheran, member trip? Slinger Historical Depot, need a meeting location.
- **\$200 matching funds program.** We will have to think what we can use it for in 2025.
- **John Hagen** – Nothing new to report

New Business:

- Dave Mielke is appointed Director at Large. All approved.
- March 22 meet at Oconomowoc – WISE to supply coffee & cookies? We remember the local group supplies this. Selling tables? There may be the club does have sales.
Also, may be dependent on the space. Donation amount to the club/museum?
- Review of Popular vote Contest rules. One gift certificate to non-members, 2 to members.
- Need to change our email addresses to WiseDivision.org, Since Trainfest.com will be controlled by National.
- 2026 Election – 1 director (Tim), 2027 – Super, Asst. Super, & Director (Dave). Clerk is appointed.
- 2025-2026 schedule –
 - Sept 13 Modelers Retreat – Kenosha
 - Oct 18 – NB Library
 - Nov 8 & 9 – Trainfest – SFP
 - Dec 13 – NB Library
 - Jan 10 – NB Library – Train School
 - Feb 21 & 22 – Mad City Train Show
 - Feb 28 – No Meet
 - March 22 – NB Library ?
 - April 18 – NB Library - Annual Meeting & election results
 - Schedule the library now for Oct & Dec 2025, 2026 dates can be scheduled after Oct 2025.
- We now have paper to generate contest award certificates.
- Craig Fuller – FireCrown (Kalmbach) stated an in-person event in November will happen

Next Meeting:

Next BOD meeting is Wednesday, February 12. It will held at the Lionel Club in New Berlin at 7pm or via zoom
The March meeting will be on Wednesday, March 12.

Meeting adjourned at 8:17pm

Respectfully submitted by David A. Rohr, Chief Clerk.

National Model Railroad Association, Inc.

Member Code of Conduct

Introduction

This Code of Conduct (“Code”) has been developed to set expectations for the behaviors, conduct, communication, and interactions between you and other members, officers and directors of the National Model Railroad Association, Inc. (“NMRA”). This Code applies to all such persons when engaging with other NMRA members, participating in any event, social media platform or other sponsored extension of the NMRA (for example, the NMRA Interchange or an NMRA-sponsored online meeting) and attending NMRA meetings, events, or activities (whether National, Regional, Division or other subset). This Code also includes general guidelines on the appropriate use of social media for NMRA matters at any level.

Why do we need a code of conduct?

We join the NMRA and participate in its activities for one common reason – we enjoy the model railroading hobby and the fun, challenges, personal growth and camaraderie that it provides. It is imperative that we keep our common bond of model railroading “front and center” and rise above the inevitable differences that exist among us in personalities, opinions, experience, gender, age, race, nationality, or any of the other factors that make each of us unique individuals. Our collective goal is to enjoy and promote the hobby of model railroading, so we must strive to avoid “distractions” that interfere with or obstruct our common purpose. Collaboration and co-operation are vital for the success of our hobby and our enjoyment of model railroading and everything it has to offer.

What does the NMRA expect of members?

The NMRA expects all members to conduct themselves in a respectful, responsible, and mature manner, and demonstrate courtesy and kindness toward other individuals. Constructive and healthy discussions and interactions are encouraged and in fact are vital to the success of our hobby. However, certain other verbal and nonverbal behaviors and actions are not consistent with the NMRA’s values and hurt our hobby and relationships, such as the use of disparaging language, shouting, profanity, confrontational, intimidating, or threatening behavior or language, and immature and disrespectful behavior or language. It is imperative that we interact in a polite and professional manner.

The NMRA does not condone abusive, threatening, or aggressive behavior toward anyone at an NMRA event or in an NMRA forum (such as social media and other forms of electronic and digital interaction). This includes other participants, event organizers or sponsors, judges, or other officials.

You should be welcoming to newcomers and remember they may not have the benefit of experience and information that you have enjoyed. Be constructive in helping to make their entry into the hobby an enjoyable one.

Harassment

NMRA events and functions are meant to be fun, educational, and inclusive. No one should be subject to intimidation, made to feel unwelcome, or put in fear of reprisal. Harassment may include behavior or language that causes alarm, distress, anxiety, fear of physical violence, offensive statements, verbal abuse, and threats. Members should be sensitive to others.

Non-Retaliation

The NMRA relies on you to identify potential issues and raise concerns that the NMRA may need to address. The NMRA prohibits acts of retaliation against any person who reports an issue honestly and in good faith, and retaliation can constitute misconduct that could subject a member to discipline. This commitment to non-retaliation assures you that raising concerns, reporting misconduct, or cooperating in any investigation will not result in adverse consequences. The NMRA prohibits retaliation in any form, at any level of the organization, recognizing that retaliatory behavior contributes to an environment of mistrust and diminishes the willingness of individuals to be collaborative and transparent. During the investigation of any matter, the NMRA makes every reasonable effort to maintain the confidentiality of those involved.

Use of social media

The rapid growth of social media combined with ease of use and pervasiveness make it an attractive channel for communication. Use of social media for communication also creates the possibility of a host of unintended consequences. To help you identify and avoid potential issues, we are providing some examples of best practices that are meant to help you understand, from a wide range of perspectives, the implications of participation in social media. Any postings that you make as a representative of or participant in NMRA sanctioned activities will reflect on you and the NMRA.

Understand Your Personal Responsibility: You are personally responsible for the content you publish on user-generated content forums, such as blogs or social media sites. Remember that what you publish will be public for a long time. Protect your privacy.

Be Accurate: Be sure that you have all the facts before you post. It's better to verify your sources first than to have to post a correction or retraction later. If you do make a mistake, admit it and correct it. Post a retraction, edit your post, make any necessary apologies. If you are editing an earlier post, make it clear that you have made a correction.

Respect Others: You can catch a whole lot more flies with honey than vinegar. If you are constructive and respectful while seeking advice, asking for help, or discussing a disagreement or bad experience, you are far more likely to reach an understanding. In some instances, you may not be able to reach an understanding or agreement, but it is your responsibility to be constructive and address the problem rather than attacking the person.

Respect Your Audience: Don't use personal insults or disparaging conduct or language toward others. Show proper consideration for others' privacy and for sensitive topics. Users are free to discuss topics and disagree with one another but be respectful of others' opinions. You are more likely to achieve your goals if you are constructive and respectful while discussing a bad experience or disagreeing with an idea or a person. Harassment is not acceptable.

Think Before You Post: There's no such thing as a "private" social media site. Search engines can turn up posts and pictures years after publication. Comments can be forwarded or copied, and screenshots are easily available. Archival systems save information even if you delete a post. If you feel angry or passionate about a subject, it's prudent to wait until you are calm and clear-headed before posting.

Does it Pass the Publicity Test? If the content of your message would not be acceptable for face-to-face conversation, over the telephone, or in another medium, it is not acceptable for a social networking site. Do not use the anonymity afforded by a social media screen name or handle to post something that you wouldn't say if you could be identified.

Take the High Ground: You are more likely to build a high quality following if you discuss ideas and situations civilly. Don't pick fights online. Remember that as a participant in NMRA programming, you are representing the NMRA, and the organization supports the principles of fun, respect, and inclusion.

Do not post information that you know (or reasonably should know) is private, confidential, or proprietary. Some information that becomes available to you may be considered private, confidential or proprietary by the owner or source of such information – think before you post and if you are unsure, check with the owner or source before posting. Do not post anything in a private forum that you would not present in any public forum because there is no true privacy on the Internet. Ask yourself if you would want to see this published in the newspaper or posted on a billboard tomorrow or ten years from now? Additionally, ask yourself if you would want to see screenshots posted to the person or persons about whom you are speaking or writing.

Be Aware of Liability: You are responsible for what you post on your own site and on the sites of others. Be sure that what you post today is not something that you will regret in the future and that you are not violating any legal guidelines. Postings on social media sites can be, and have been, the subject of lawsuits alleging defamation, slander, or libel. In such a lawsuit, a court can compel the social media platform to disclose your account information; you won't be anonymous.



How does the NMRA enforce this code?

The NMRA can enforce this code of conduct independently, or in response to a complaint, after notice to affected members and due process including an opportunity to be heard. Proceedings include gathering facts, interviewing witnesses, conducting a hearing, and imposing discipline or dismissing the matter. The NMRA is a private membership organization; membership, member benefits, and the use of NMRA trademarks and intellectual property are not free or public. Therefore, the NMRA's leadership can determine that a violation of this code of conduct justifies a disciplinary action. Examples of actions include censure (a warning the similar conduct could cause termination), removal from an elected office, disqualification from elected offices or leadership, and termination of membership. The NMRA's Corporate Policies & Procedures Manual (CPPM), and Ohio state law applicable to nonprofit membership corporations such as the NMRA, governs the enforcement of this code and member discipline.

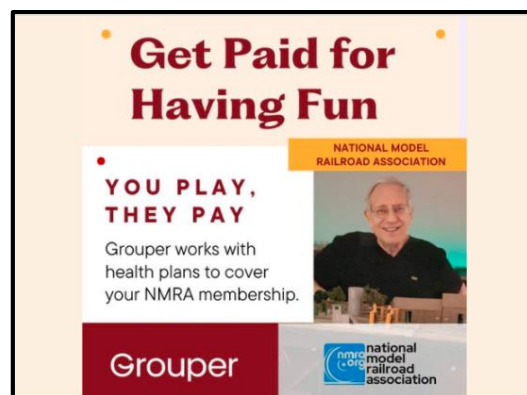
Get Paid for Playing with Trains

One of the many benefits of NMRA membership that are listed on page 9 and 10 of this issue is Grouper. Grouper is a platform that connects people with groups and activities that improve social connection and health. If you have a Medicare Advantage health plan, Grouper will mail you a check for \$50 to reimburse your annual NMRA dues. Then, for every 3 months that you report your in-person activity with NMRA, Grouper will send you a check for \$20.

Several WISE Division members have already availed themselves of this valuable benefit. It's easy to set up an account with Grouper. Below are the step-by-step instructions to get started earning money by playing with trains.

- Go online to nmra.org
- Search for **Benefits**
- In the long list, scroll down to **Grouper**
- Click on the link "**.....reimbursement.....**" Which takes you to the Grouper website
- Click on the box **See if you qualify**
- After a few moments, you'll get a message "**Your health plan includes Grouper**"
- To join Grouper, click on the box **Create an account** on this page
- Fill in your personal information. No credit card is required.
- Commit to ongoing NMRA activity
- This ends your Grouper account set-up – you will get an email confirmation of success
- Check will come in the mail

Then start reporting your NMRA activity on a monthly basis by logging in to Grouper.



Layout Tours

David Mielke

On February 22nd, NAPM or the North American Prototype Modelers club opened the doors to their 26 scale mile Class A track layout to the Division members as part of the Division's meet agenda. Located on 27th Street in Milwaukee, Wisconsin, two-thirds this layout is comprised of double-tracked mainline with a single-track that meanders throughout the double-track section on its way around the layout. The use of floor-to-ceiling space dividers provides a separation of the many distinct regions along the road.

Impressive as that all may be, it is the art-deco passenger depot inspired by Omaha's Union Station that immediately catches the visitor's eye upon entering the space. The building, constructed primarily of plastic "Lego blocks" boasts an internally lit station served by 12 stub-end platform tracks with platforms that are protected by an intricate arched train shed that spans a scale eighth of a mile.



Throughout the layout, there are many more areas of completed scenery, structures or landforms that highlight the modeling talents of the NAPM members. Each week, new works arrive to the layout, continuing to surpass members and visitors alike.

For more information, visit [North American Prototype Modelers, Ltd.](http://NorthAmericanPrototypeModelers.Ltd)



Shows and Swaps

Wisconsin and Northern Illinois

Monthly

Great Midwest Train Show

Dupage County Fairgrounds, Wheaton, IL
<https://trainshows.net/event/104/great-midwest-train-show>

Mar. 2, Apr.6, May 4, June.1, Aug.3
 Sept. 7, Oct. 5, Nov, 2, Dec.7 .\$.8 admission

Kenosha Union Hall Swap

3030 39th Ave, Kenosha WI
<https://www.facebook.com/p/Kenosha-Model-Railroad-Train-Show-100087630919326/>

Mar. 9
 9:00am – 1:00pm \$5 admission

Milwaukee LRRC Swap Meet

New Berlin Entertainment Center,
 16000 W. Cleveland
<https://milw-lrrc.org/mlrrc-train-show-and-sale>

Mar. 16, Oct. 19, Nov. 16, Dec. 21
 8:00am – 12:00pm
 \$4.00 admission
 Club House opens at 10:00am
 2721 S. Calhoun Rd, back of building.

Annual Train Shows

Show Dome Railroad Train Show

Milwaukee Domes
<https://milwaukeedomes.org/event/show-dome-theme-train-show-2/>

Jan. 18 – Apr. 6

Delavan Train Show & Sale

Delavan, WI
https://delavantrainshow.com/?page_id=2
<https://www.facebook.com/DelavanTrainShow/#>

Mar. 8 – 9

Lena IL Train Show

<https://trainshows.net/event/672/depot-stove-gang-35th-annual-show>

Mar. 15 – 16

Sheboygan Swap

Windjammer Banquet Hall
 Lakeshore Lane
 2519 S. Business Dr. Sheboygan WI
<https://www.facebook.com/SSSMRE/>

Mar. 19
 9:00am – 4:00pm
 \$4 admission

March O Scale Meet

Westin Lombard Yorktown Center
 70 Yorktown Center
 Lombard IL
<https://marchmeet.net/WP/>

Mar. 20 – 23

TCA York Spring Swap Meet

<https://www.tcatrains.org/event/tca-eastern-division-york-train-meet/>

Apr. 24 – 26

Waupaca WI Swap Meet

<https://wamrltd.com/temporaryImages/Strawberry%20Fest%20Model%20Railroad%20Swap%20Meet%20flyer%202025.pdf>

June 21
 9:00am – 4:00pm

WISE RPM Meet

Kenosha, WI
 Sep. 13

NMRA Trainfest ®

Baird Center
 Nov. 1 – 2

Shows and Swaps (continued)

Title Town Train Show

Green Bay, WI

<https://www.ttsqbllc.com/showinfo.html>

May 3 – 4

Additional Shows

Racine LRRC Open House

4625 Washington Ave.

(Above American Coin & Jewelry - park behind the store and enter through side entrance.)

Mar. 22, Apr. 12, May 17

10:00am – 2:00pm

Free Admission

Open House

WCGD (Waukesha County Gandy Dancers

Badgerland S Gaugers Club

<https://www.wcgdrailroad.com/events>

Mar. 1

10:00am – 6:00pm

Three River's Model Railroad Show

Onalaska Omni Center

255 Riders Club Road, Onalaska, WI

[https://www.facebook.com/photo/?fbid=10213072621807596](https://www.facebook.com/photo/?fbid=10213072621807596&set=p.10213072621807596)

Mar. 15 – 16

Rock River Valley Train Show

Harlem High school

9229 N. Alpine Road,

Machesney Park, IL

<https://rrvd-nmra.org/show/>

Mar. 29 – 30

Opens at 10:00 - \$5 admission

Metro Milwaukee Train Show

Ozaukee Fairgrounds

W67 & N866 Washington Avenue

Cedarburg, WI

<http://members.trainorders.com/scrimjimmy/spring.html>

April 13

9:00am – 4:00am

\$5 admission

GB-AMRC

<https://gbamrcdepere.wixsite.com/gbamrcdepere/open-house>

Apr. 19

Kettle Moraine Ballast Scorchers

Washington County Fair Park

3000 Pleasant Valley Road – Highway 45 & PV

Oct. 12

9:00am – 3:00pm



Women.



Launching the Women in Model Railroading SIG!

<https://www.nmra.org/sigs/women-in-model-railroading>

Women Modelers Really Do Exist! Join the Women in Model Railroading Special Interest Group!

What exactly is the WIMRR SIG?

- SIGs = independent, non-profit membership groups organized to provide a forum for the exchange and collection of railroad prototype and/or model railroad information about specific topics.
- Our focus is to provide a space for women to share their modeling work, ideas, modeling adventures, and to create friendships. The group will promote women in the hobby.
- WIMRR has been recognized by the NMRA. Members do not have to be a member of the NMRA to join the SIG.

What do we offer our members?

Women are very social and supportive to one another! We've therefore provided a plethora of ways to interact, collaborate and support one another.

- Facebook: Women in Model Railroading
- Facebook: The Steam Sisters
- Newsletter, 3 times per year
- Virtual Meets
- Coordinated Ladies Night Ops
- Bring a Friend campaigns
- NMRA annual conventions
- Local and regional events where members decide to represent WIMRR

Join the SIG today, by going to <https://www.nmra.org/sigs/women-in-model-railroading> and completing the provided form.

Your SIG Steering Committee members are:

Christina Zambri
marketing@nmra.com

Cydney George-Abatecola
cgeorge1714@gmail.com

Michelle Kempens
michellekempens@gmail.com

Nancy Workman
womeninmodelrailroading@nmra.com

Cynthia Priest
zenditor@psiretech.com





Toy Train Sale and Show

(See below for more information)

All Gauges & All Scales

SUNDAY DATES

<u>2025</u>	<u>2025</u>	<u>2026</u>	<u>2026</u>	<u>2027</u>
January 19	October 19	January 18	October 18	January 17
February 23	November 16	February 15	November 22	February 28
March 16	December 21	March 15	December 20	March 21

BUY • SELL • TRADE
NEW • USED • PARTS

Sale: New Berlin Entertainment Center
8:00 am to 12:00 noon ADMISSION: \$4.00

16000 West Cleveland Avenue • New Berlin, Wisconsin
(Enter on east side of building)

Kids 12 and under: FREE with Adult

For More Information or Table Reservations

Robert Sobolik
(414) 483-5886

RobertDSobolik@netzero.com



TRAIN SHOW: at Club will be open by 10:00 am
2721 S. Calhoun Rd (in back of building) Donations Accepted

Visit our Web Site
www.milw-lrrc.org

Like & Follow us on
FACEBOOK



(turn over for Train Sale & Show Schedule)



Our 78th Year

OPEN HOUSE

Since 1947

SATURDAY and SUNDAY

APRIL 5 and 6, 2025

NOVEMBER 29 & 30, 2025

10:00 am to 5:00 pm

Parkland Plaza

2721 South Calhoun Road

New Berlin, Wisconsin 53151

(262) 754-9900

(entrance in back of building)

OPEN WEEKLY

**Open Fridays 1:00 pm to 9:00 pm
year round (unless a holiday)**

October through April

**Saturday & Sunday: 1:00 pm to 5:00 pm
call to confirm or check website**

See Many Toy Trains Running on Our Huge Layout

--- Minor Train Repairs ---

OPEN HOUSE DONATION: \$2.00

Veterans get in FREE – Scouts in uniform get parents in FREE

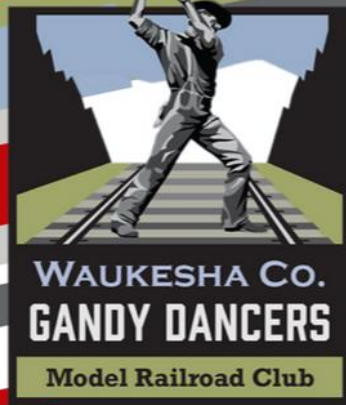
Children 12 and under are FREE with an adult



Visit our Web Site
www.milw-lrrc.org

Like & Follow us on
FACEBOOK





OPEN HOUSE

OCTOBER 5

10:00 AM - 6:00 PM

DECEMBER 7

10:00 AM - 6:00 PM

NOVEMBER 23 - 24

10:00 AM - 8:00 PM

JANUARY 25 - 26

10:00 AM - 6:00 PM

MARCH 1

10:00 AM - 6:00 PM

**741 NORTH GRAND AVENUE
WAUKESHA, WI 53186**

**FIND US AT:
WWW.WCGDRAILROAD.COM**

**CONTACT US:
WCGDRAILROAD@GMAIL.COM**

LIONEL RAILROAD CLUB
SOUTHEASTERN WI

2024 – 2025

Open House Schedule

Hours: 10:00am -2:00pm

10/19/2024	11/23/2024
12/21/2024	01/18/2025
02/22/2025	03/22/2025
04/12/2025	05/17/2025

Above American Coin & Jewelry
4625 Washington Ave., Racine

Park behind the store
Enter through the side entrance.

Admission is free.
Donations gratefully accepted.

 Like us on Facebook!
Lionel RR Club of SE WI



(Please Turn Over for More Information!)

LIONEL RAILROAD CLUB

SOUTHEASTERN WI

Outstanding Features of Our Club Rooms and Layouts

Three "O" Gauge layouts, and one "S" Gauge Layout, all of which are work-in-progress status!!

- 10 x 14-foot Fastrac layout with numerous switches and wyes for operating on different routes, remote control operation, featuring Plasticville city and a carnival scene with operating rides.
- 17 x 27-foot layout that features 3 loops of track with wide sweeping curves, numerous sidings, controlled with state-of-the-art remote-control components. Scenery includes our city of Spencer, that features industrial, agricultural, and suburban areas.
- 4 x 16 layout with traditional three-rail tubular track and switches, for the pre-World War Two model train collector and operator.
- *Our Newest Layout is a 5 x 8 "S" Gauge Layout!*



(Please Turn Over for More Information!)



Delavan Train Show

SATURDAY, MARCH 8 · 9am - 4pm

SUNDAY, MARCH 9 · 10am - 4pm



FREE ADMISSION

Featuring operating layouts in multiple scales throughout Downtown Delavan!

DelavanTrainShow.com

53115.trainshow@gmail.com · Find us on Facebook! 

Thank You to Our Sponsors

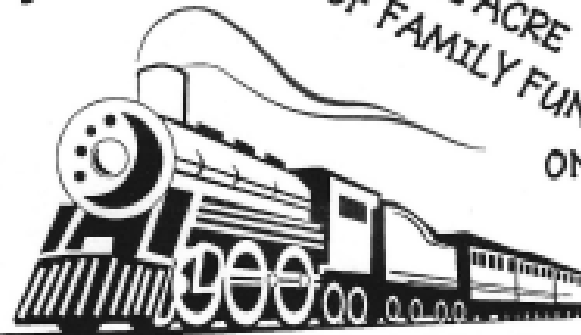


ROCK RIVER VALLEY TRAIN SHOW



DOOR PRIZES
OVER ONE ACRE
OF FAMILY FUN

NEW & USED SALES
OPERATING LAYOUTS



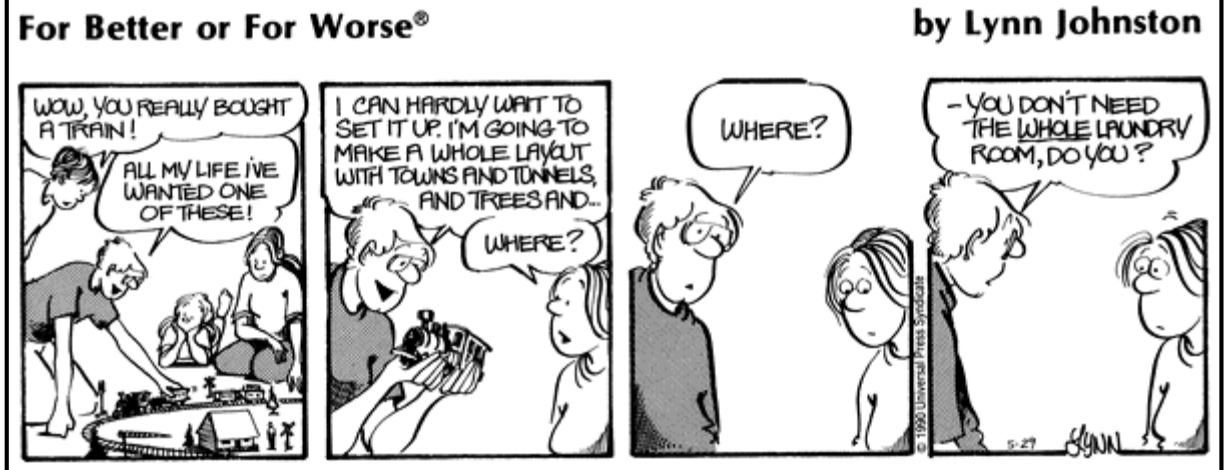
ONLY \$5.00 CASH
KIDS FREE
FREE PARKING

March 29 & 30, 2025
Sat 10-5 Sun 10-3

Harlem High School
9229 N. Alpine Rd.
Machesney Park, IL

Rrvd-nmra.com

facebook.com/TheRRVDNMRA



Nov 28, 2023

**NORTHWESTERN ILLINOIS
MODEL RAILROAD INC.**



OPEN HOUSE

**SATURDAY AND
SUNDAY**

**April 26 & 27 2025
10:00AM to 4:00PM**

**PUBLIC IS INVITED TO
STOP IN TO SEE THE
HO SCALE RUNNING ON MAIN
FLOOR LAYOUT AND
DOWN IN THE BASEMENT**

\$1.00 Per Person Donation

**NORTHWESTERN ILLINOIS
MODEL RAILROAD INC.
101 MAIN STREET
CHADWICK IL**

**Duane Imel 815-238-0245
nwilmrr@gmail.com**

**On Sunday you can enjoy a
Fire Department Pancake
Breakfast serving 7am-1pm at
the Fire Station on Route 40**

**Next Open House
Nov 15 & 16 2025**

Current HO Scale Car Projects

N&W HC-46 ACF 2-Bay Covered Hopper

Arrived September 2022

Using Accurail's 2200 Series ACF 2-Bay Covered Hopper as the basis, we are offering it in a Norfolk & Western repaint scheme. These cars are N&W class HC-46 and are from an original batch of fifty built by in 1966 by ACF with the Round Herald paint scheme. Subsequently some cars went through a general maintenance program and were repainted in the block N&W livery. Photos were found showing at least three of these cars (road numbers 170753, 170768 and 170794) were reweighed at some later date because that area is "patched out" on the car with the new data displayed. Those same photos place these three cars as being in service in 1992 and 2004. It is these three, highly unique, road numbers that Cincinnati Division 7 is now offering for sale as limited edition kits.

A special Thank You! goes out to the N&W Historical Society for their assistance in providing research support in the development of this limited-edition freight car. Their investment of time and the supply of photos and information made this car possible.

Pricing is \$25 per car, or a 3-car set at \$70. Shipping (via USPS Priority) is \$10.40 for one car and \$18.40 for two or more cars. Ohio residents, please add 7.8% sales tax on the total price of the kits and the shipping/handling fee.

Customers outside the USA, please **contact us** for shipping arrangements and charges.



To order, please send **your email and phone** information along with a **check or money order** in US dollars, payable to Cincinnati Division 7, MCR, NMRA, to:

Cincinnati Division 7 Car Projects
c/o Paul Maciulewicz
9151 Congress Court
West Chester, Ohio 45069

Contact our **Car Projects Chairperson** with any questions.

Add this superb, one of a kind, historical tank car to your collection. The Northern Utah Division of the NMRA is selling a series of HO scale Utah Oil Company (UTOCO) tank cars manufactured by InterMountain Railway.

The cars feature a build date of 8/45 and a test date of 9/28/51. Originally intended to be the convention cars for the 2019 NMRA convention in Salt Lake City, supply chain issues prevented the cars from arriving on time. Offered in six road numbers, the cars have metal wheelsets and Kadee couplers.

Priced at \$45.00 each with free shipping, you can get your very own historical tank car before this limited edition is sold out, go to either: www.northernutahnmra.org/club-car or <http://northern-utah-division-nmra.square.site>

